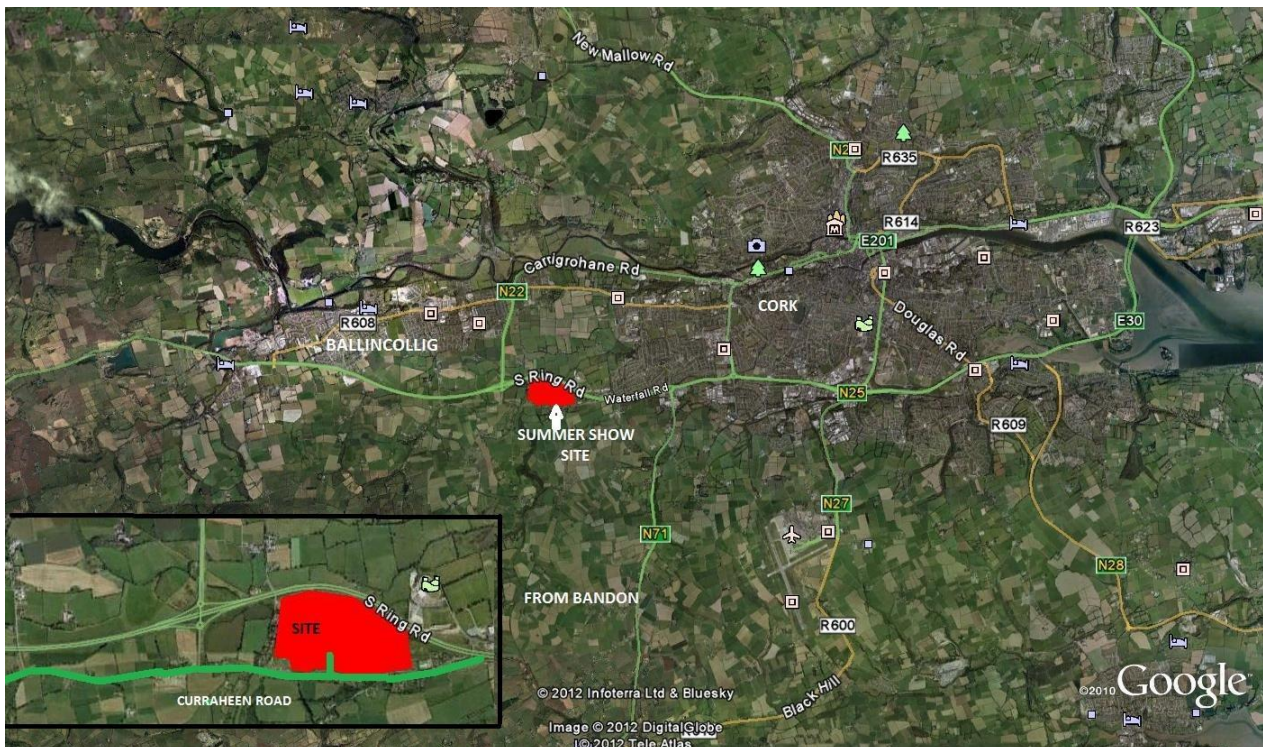


1. TRAFFIC MANAGEMENT PLAN

1.1. Site Location

The Cork Summer Show 2023 is to be held at Curraheen, Cork. The site is immediately adjacent to the N22 Ballincollig bypass as illustrated below.

Curraheen Site



1.2. Access to the Site

Access to the site is via the Curraheen Junction on the N22. There are four entrances to the site which are wide enough to permit visitors, exhibitor traffic and pedestrians to enter safely. There is a separate emergency exit from the site to the west, Access C, specifically for an ambulance in an emergency situation. These access points will be labelled on the final drawings available early June.

1.3. Traffic Management

Signage and stewards will ensure that all traffic will access the site entrance along the Curraheen Road from an easterly direction (access via Marymount exit/flyover). Access to the site along the Curraheen Road from a westerly direction will be discouraged. At Garda discretion, a one-way system may be enforced in the area at peak times.

Traffic on the N40 from the Macroom (west) direction will be directed to proceed as far as the Curraheen exit and thereafter to the Curraheen Road. Similarly, traffic coming from the Ballincollig/Carrigrohane direction will be directed onto the N40 and east as far as the Curraheen exit.

Traffic from the east (Bishopstown and Cork) will be directed to the N40 and thereafter to the Curraheen road exit leading to the site entrance.

No parking will be permitted on the N22/N40 Ballincollig Bypass, N22 Poulavone Link Road, on/off ramps of Poulavone/Curraheen interchanges and the Curraheen Road, the roundabouts of Poulavone/Curraheen interchanges. No parking will be permitted on the N40 to Hobbs Cross Junction on the Curraheen Road, no parking will be permitted on the Curraheen Road from Marymount Hospital to Hobbs Cross and no parking will be permitted on the Clash Road in its entirety. It is envisaged that a road closure will be put in place on Saturday 17 and Sunday 18 June from 11.00am to 5.30pm.

Traffic management stewards will be conscious to ensure that delays to traffic on the N22/N40 Ballincollig will not occur.

It is also envisaged that the majority of traffic issues relating to trade stands, exhibitors and competitors will be before 10.00am each morning and that members of the public will arrive over a number of hours later in the day.

All residents on the Curraheen Road from Marymount Hospital going west to the access ramp for the N22 and those residing on the Clash Road will be notified in advance of the Show. We will endeavour to address any concerns they have in relation to traffic and any other issues.

Exiting traffic will be directed west along the Curraheen Road, past the Clash Road junction, as far as the access ramp to the N22 from which traffic will disperse.

MAS Stewards wearing yellow reflective jackets will be in position at the Curraheen Road entrances and also at the Clash Road emergency exit. Vehicles will flow freely into the car parks; entry payments to the show will take place only within the showgrounds. It is envisaged that a member of An Garda Síochána will be on duty at the two roundabouts at the top of the slip lane off the N22 (Curraheen exit).

A detailed layout of the traffic management plan and signage schedule is included in Section 2.6.

Traffic will be directed to off-site car parking. VMS Signage provided by Laois Hire positioned at Exit 2 N22 East and Exit 3 N40 West will direct traffic to Park & Ride facilities at Ballincollig and Black Ash.

Agreement has been reached with the following venues for parking in remote car parks:

1. Cork City Council Park & Ride at Black Ash

Traffic exiting from the Jack Lynch Tunnel will be directed to this location which will be served by shuttle buses. Neon directional signage will be erected on the N40 in consultation with Laois Hire/TII.

2. Ballincollig Shopping Centre

Traffic will be directed at the EMC exit when approaching from the west on the N40 to the Ballincollig Shopping Centre, which will be serviced by shuttle buses. Neon Directional sign will be erected on the N40 in consultation with Laois Hire/ NRA.

3. Cork Greyhound Track

A shuttle bus will operate from the car park at the Greyhound Track to the Showgrounds.

4. Munster Technological University (Approval Pending)

Traffic from the Model Farm Road and the Curraheen Road in Bishopstown will be directed onto Melbourne Road to additional car parking at MTU on Sunday, should the need arise. A shuttle bus will service this site should this car park be brought into service.

1.4. Site Layout

Site layout for the Cork Summer Show is as indicated in the attached map. Please refer to scale drawing for detail.

The exhibition area of the Show site is at the centre of the site, with parking provided to the east and west as outlined below. The locations of the Joint Control Centre, Event Medical Centre and a designated Missing Children area are indicated on the drawings and their locations signposted on site.

There are separate areas provided for the various types of exhibitions and attractions including the following:

| | | |
|--------------------------------|-------------------|------------------------|
| Horse Showing & Judging | Food/Trade Stalls | Crafts |
| Mounted Games | Restaurants | Workshops |
| Cattle & Sheep Showing/Judging | Licensed Bar | Farrier Demonstrations |
| Pet Dog Show | Charity Partners | Flower Arranging |
| Rare Breeds | Funfair | Plant Stalls |
| Poultry Displays | Steam Engines | Allotments |
| Vintage Cars & Tractors | Face Painting | |

Please see Appendix C for the Programme of Events for the Cork Summer Show 2023.

1.5. Onsite Parking

Parking is provided on site as follows:

| Car Park | Designation | Number of Vehicles |
|----------|--------------------------|--------------------|
| 1A | Public | 2,296 |
| 1B | Public | 1,552 |
| 1C | Public | 1,364 |
| 1D | Overflow | 1,795 |
| 1E | Exhibitor (Show-jumping) | 269 |
| 2 | Exhibitor | 630 |
| 3 | Exhibitor | 600 |

The total car parking capacity is 8,506 vehicles.

Exit passages will be provided to allow cars vacate parking areas and progress directly to the exit gate. MAS will employ experienced car park supervisors, supported by car park attendants, in each location to manage traffic within the car parks. All MAS traffic Stewards will be issued with yellow reflective jackets with MAS on the back.

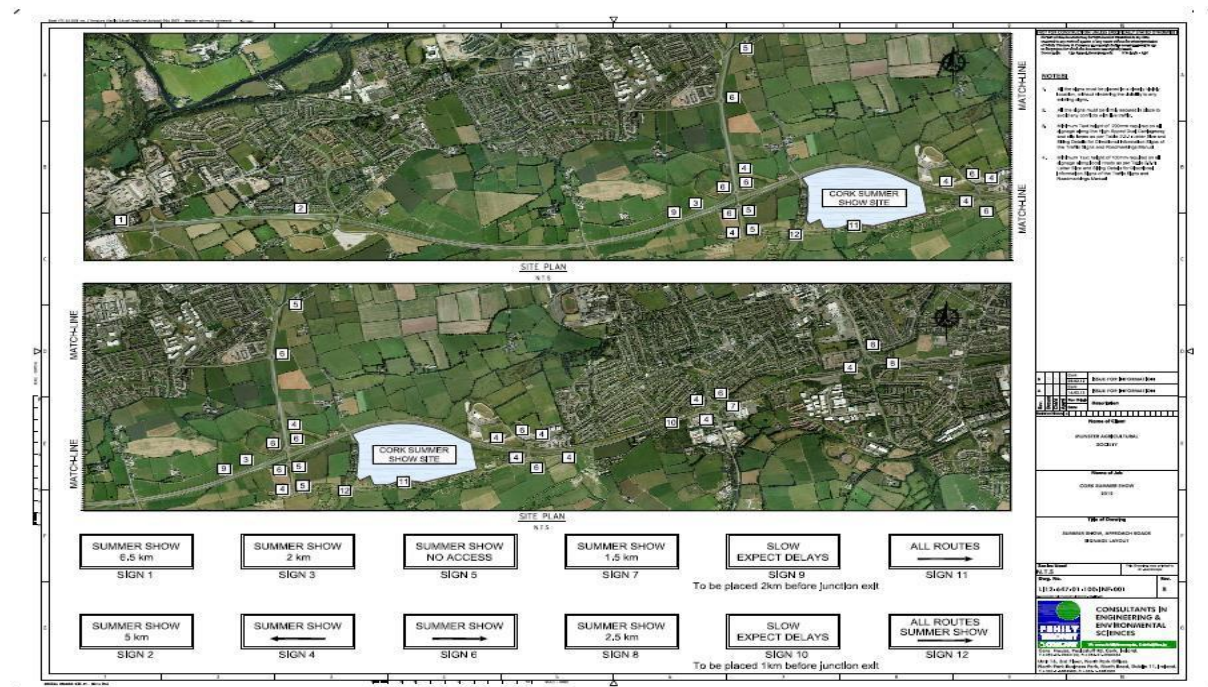
Designated disabled parking will be provided within the car parks closest to the exhibition areas.

Traffic will exit by the entrances at the Main entrance, and also at the entrance on the Western gate to the main entrance. Traffic will not exit via the gate at the Bus Stop (unless the smooth flow of traffic requires same as agreed with Gardai on the day), on the eastern side of the site.

1.6. Bus – Public & Shuttle

An application has been made to Bus Eireann to extend the 208 Bus (St Luke’s to Marymount) to the Show site on both days of the Show.

A free shuttle bus service, using two 20-seater buses, will operate from the Black Ash Park & Ride Facility site, Ballincollig Shopping Centre, Munster Technological University and Cork Greyhound Track to the Showgrounds every 20 minutes. A Steward will be assigned to the Black Ash Park & Ride Facility car park to ensure smooth operation of this facility.



7.16 Site Capacity

The maximum permitted public audience on site will be 10,000 at any one time. In addition, it is estimated that in the region of 1,800 exhibitors will participate, in addition to 250 staff and stewards.

Capacity will be monitored based on the volume of public vehicles parked in the car parks.

In the event that the site reaches 90% capacity, the Stewards will be advised by the Safety Officer, who will work with An Garda Síochána, that additional parking is available at Munster Technological University (MTU) (approval pending at time of this application). The VMS signs at the Jack Lynch Tunnel and the Ballincollig N40 exit will be changed remotely to: “NO Parking CORK Show. Use PNR MTU”. The bus provider will immediately dispatch a shuttle bus and commence Park & Ride services.

A press release will issue from the Event Management Control Centre to all media informing them of the change in parking. 96FM/C103FM are providing live feeds from the show site and will carry traffic and parking information on their radio shows and their social media channels.

The Cork Summer Show website will be updated immediately with the relevant information.

Gardai on point duty will inform all cars arriving by the Curraheen Road that additional spaces are available at the Greyhound Track opposite the Showgrounds where a Park & Ride facility is in place.

Access traffic can be taken off the Clash Road at any time should the need arise during the event.