



**Cork City  
Development Plan**  
2015 - 2021

# Volume Two

Mapped Objectives







# Table of Contents

High quality versions of all the maps below are also available on our website: [www.corkcitydevelopmentplan.ie](http://www.corkcitydevelopmentplan.ie)

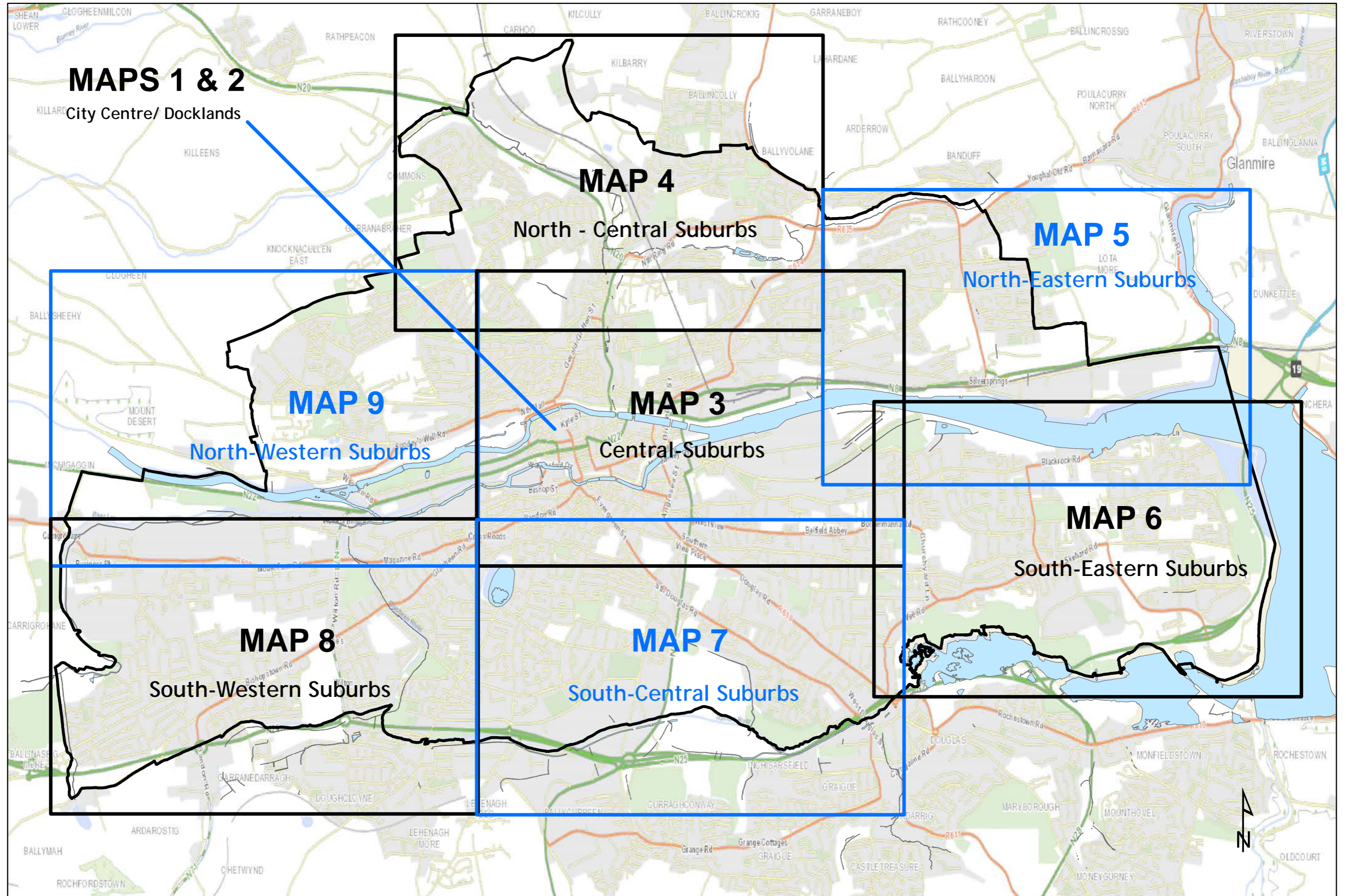
## Zoning and Development Plan Objectives

- Map Key
- Map 1 City Centre and Docklands Zoning Objectives
- Map 2 City Centre Development Objectives
- Map 3 Central Suburbs Objectives
- Map 4 North Central Suburbs Objectives
- Map 5 North Eastern Suburbs Objectives
- Map 6 South Eastern Suburbs Objectives
- Map 7 South Central Suburbs Objectives
- Map 8 South Western Suburbs Objectives
- Map 9 North Western Suburbs Objectives

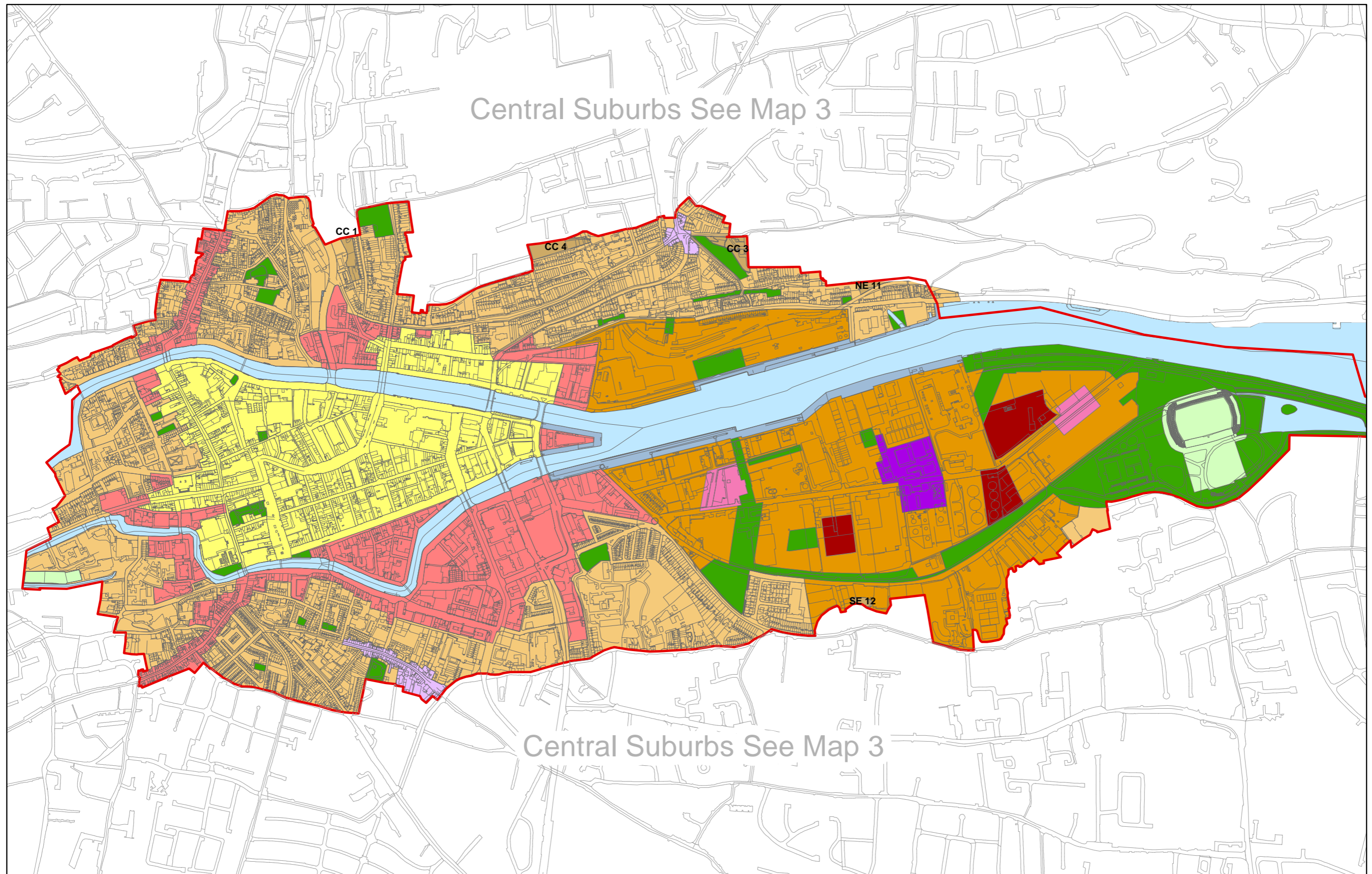
## Other Mapped Development Objectives

- Map 10 Existing Local Area Plans
- Map 11 Car Parking Zones
- Map 12 Views and Prospects City Centre and Docklands (1)
- Map 13 Views and Prospects City Centre and Docklands (2)
- Map 14 Views and Prospects: North-West
- Map 15 Views and Prospects: North-East
- Map 16 Views and Prospects: South-East
- Map 17 Views and Prospects: South-Centre
- Map 18 Views and Prospects: South-West
- Map 19 Cork Public Safety Zone (Outer)

Page 01  
Page 02  
Page 03  
Page 04  
Page 05  
Page 06  
Page 07  
Page 08  
Page 09  
Page 10  
Page 11  
Page 12  
Page 13  
Page 14  
Page 15  
Page 16  
Page 17  
Page 18  
Page 19  
Page 20



Base map © OSI; all rights reserved.

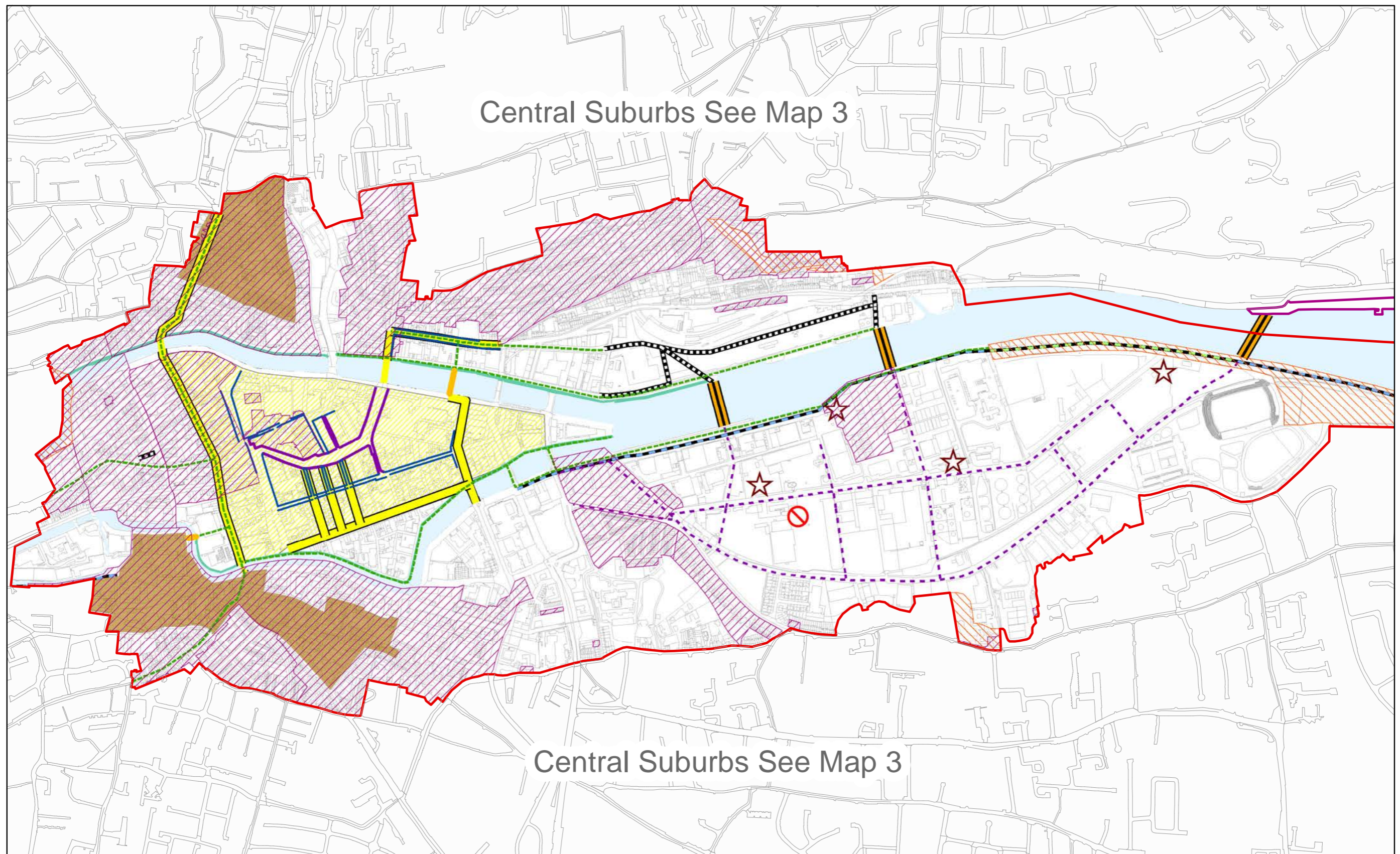


Zoomable map available on our website: [www.corkcitydevelopmentplan.ie](http://www.corkcitydevelopmentplan.ie)

Base map © OSI; all rights reserved.

- |  |  |                                 |  |                          |                                   |
|--|--|---------------------------------|--|--------------------------|-----------------------------------|
| 1-City Centre Retail Area              | 4-Residential, Local Services and Institutional Uses | 9-Neighbourhood Centres         | 13-Sports Grounds                      | 16-Mixed Use Development | 19-Rivers/Water Bodies Protection |
| 2-City Centre Commercial Core Area     | 5-Light Industry and Related Uses                    | 10-Local Centres                | 14-Public Open Space                   | 17-Quayside Amenity Area |                                   |
| 3-Inner City Residential Neighbourhood | 8-District Centres                                   | 12-Landscape Preservation Zones | 15-Public Infrastructure and Utilities | 18-Schools               |                                   |



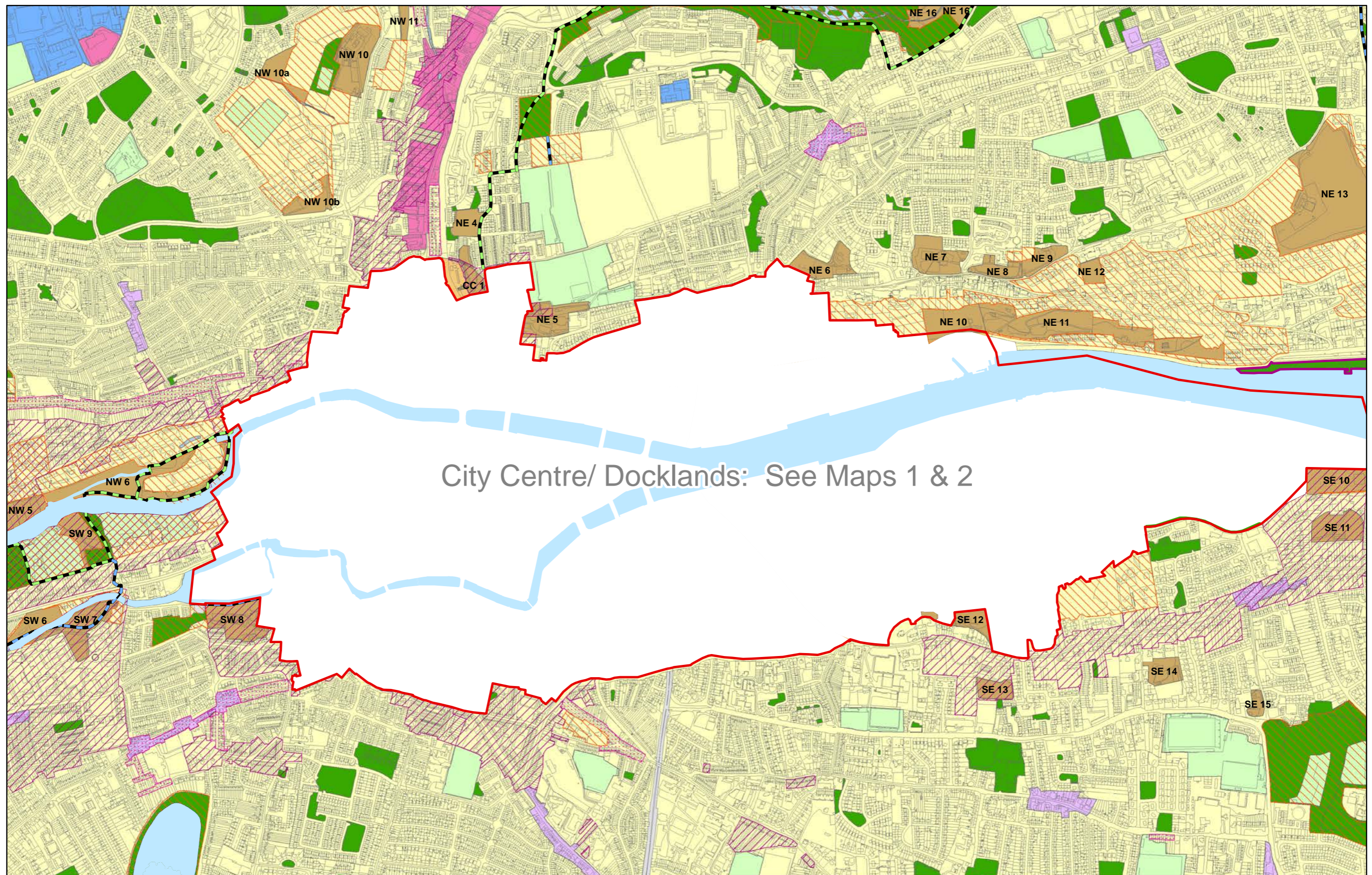


Zoomable map available on our website: [www.corkcitydevelopmentplan.ie](http://www.corkcitydevelopmentplan.ie)

Base map © OSI; all rights reserved.

- |                                  |                                  |                                      |                          |
|----------------------------------|----------------------------------|--------------------------------------|--------------------------|
| LAP to be prepared               | Proposed Tall Buildings Location | Strategic Pedestrian Links           | New or Realigned Streets |
| Areas of High Landscape Value    | Primary Retail Frontages         | Pedestrian Priority Area             | Indicative New Streets   |
| Architectural Conservation Areas | Key Secondary Retail Frontages   | Pedestrian Bridges                   | Bridge Infrastructure    |
| Historic Street Character Areas  | Public Realm Improvements        | Amenity Routes                       | SEVESO Site              |
| Cultural Precinct                | Waterfront Amenity Area          | Proposed New Amenity Routes/Upgrades |                          |

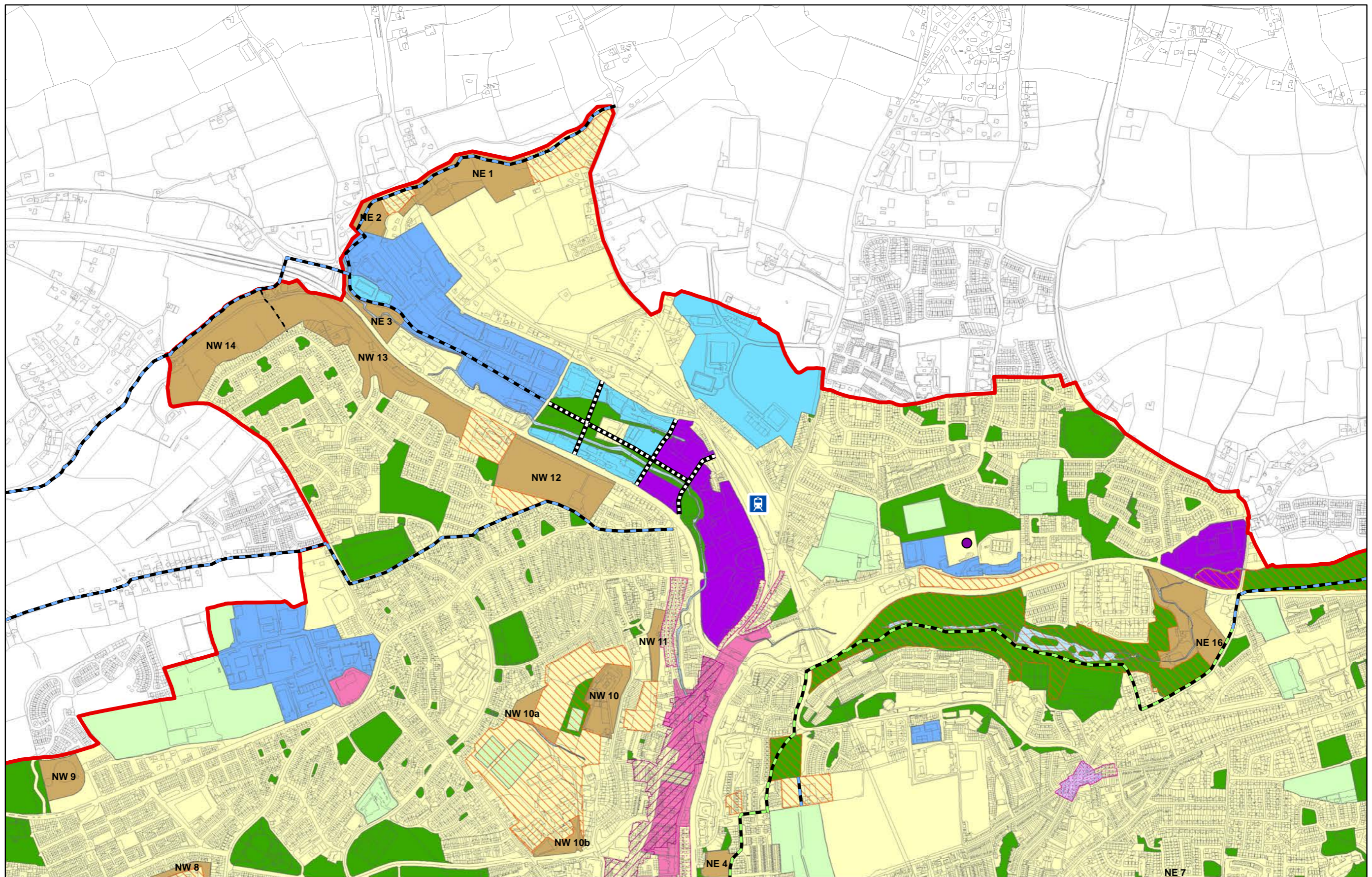




Zoomable map available on our website: [www.corkcitydevelopmentplan.ie](http://www.corkcitydevelopmentplan.ie)

Base map ©OSI; all rights reserved.

- |                                  |  |  |                                   |                          |                                      |
|----------------------------------|--|--|-----------------------------------|--------------------------|--------------------------------------|
| Areas of High Landscape Value    | 2-City Centre Commercial Core Area                   | 5-Light Industry and Related Uses      | 12-Landscape Preservation Zones   | 16-Mixed Use Development | Local Area Plan to be prepared       |
| Historic Street Character Areas  | 3-Inner City Residential Neighbourhood               | 8-District Centres                     | 13-Sports Grounds                 | 17-Quayside Amenity      | Amenity Routes                       |
| Architectural Conservation Areas | 4-Residential, Local Services and Institutional Uses | 9-Neighbourhood Centres                | 14-Public Open Space              | 18-Schools               | Proposed New Amenity Routes/Upgrades |
| 1-City Centre Retail Area        | 10-Local Centres                                     | 15-Public Infrastructure and Utilities | 19-Rivers/Water Bodies Protection |                          |                                      |

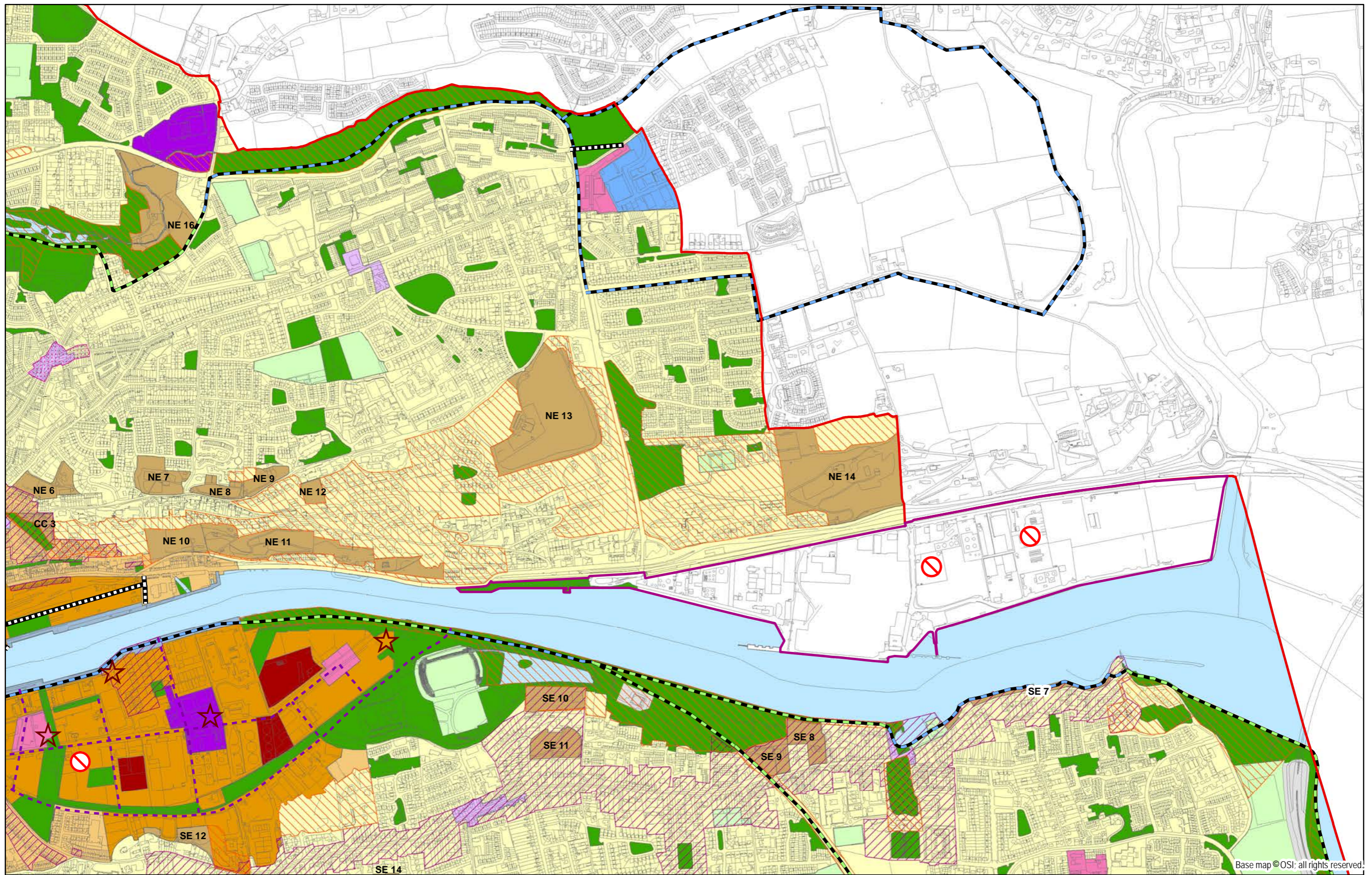


Zoomable map available on our website: [www.corkcitydevelopmentplan.ie](http://www.corkcitydevelopmentplan.ie)

Base map © OSI; all rights reserved.

- |                                  |  |                         |                                 |                                   |                                      |
|----------------------------------|--|-------------------------|---------------------------------|-----------------------------------|--------------------------------------|
| Areas of High Landscape Value    | 4-Residential, Local Services and Institutional Uses | 8-District Centres      | 12-Landscape Preservation Zones | 19-Rivers/Water Bodies Protection | New or Realigned Streets             |
| Architectural Conservation Areas | 5-Light Industry and Related Uses                    | 9-Neighbourhood Centres | 13-Sports Grounds               | Traveller Accommodation           | Amenity Routes                       |
| Historic Street Character Areas  | 7-Business and Technology                            | 10-Local Centres        | 14-Public Open Space            | Proposed Railway Station          | Proposed New Amenity Routes/Upgrades |



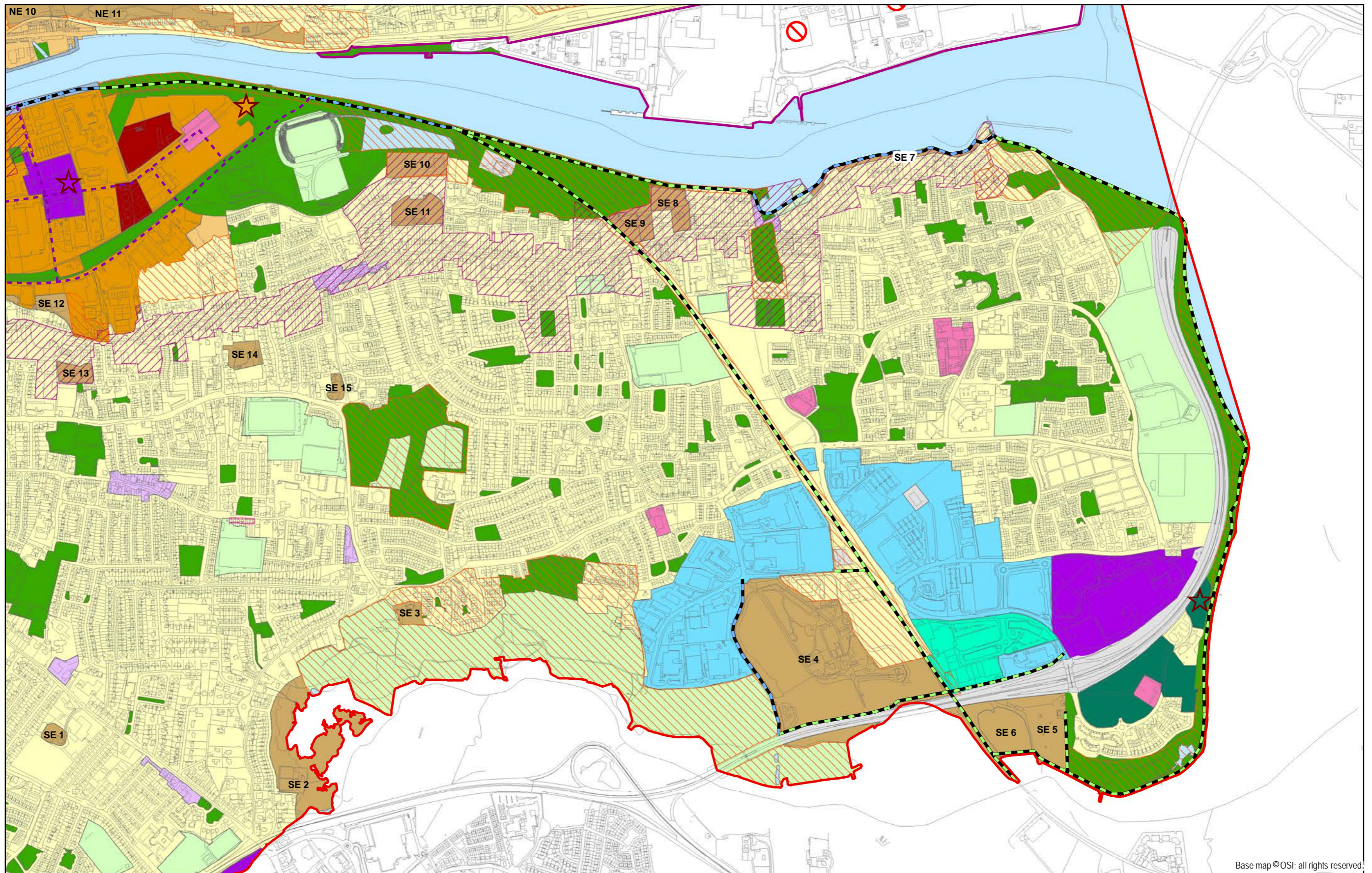


Zoomable map available on our website: [www.corkcitydevelopmentplan.ie](http://www.corkcitydevelopmentplan.ie)

Base map © OSI; all rights reserved.

Areas of High Landscape Value	4-Residential, Local Services and Institutional Uses	10-Local Centres	15-Public Infrastructure and Utilities	19-Rivers/Water Bodies Protection	Indicative New Streets
Architectural Conservation Areas	5-Light Industry and Related Uses	12-Landscape Preservation Zones	16-Mixed Use Development	Local Area Plan to be Prepared	Amenity Routes
Historic Street Character Areas	8-District Centres	13-Sports Grounds	17-Quayside Amenity	Proposed Tall Buildings Location	Proposed New Amenity Routes/Upgrades
3-Inner City Residential Neighbourhood	9-Neighbourhood Centres	14-Public Open Space	18-Schools	New or Realigned Streets	SEVESO Site

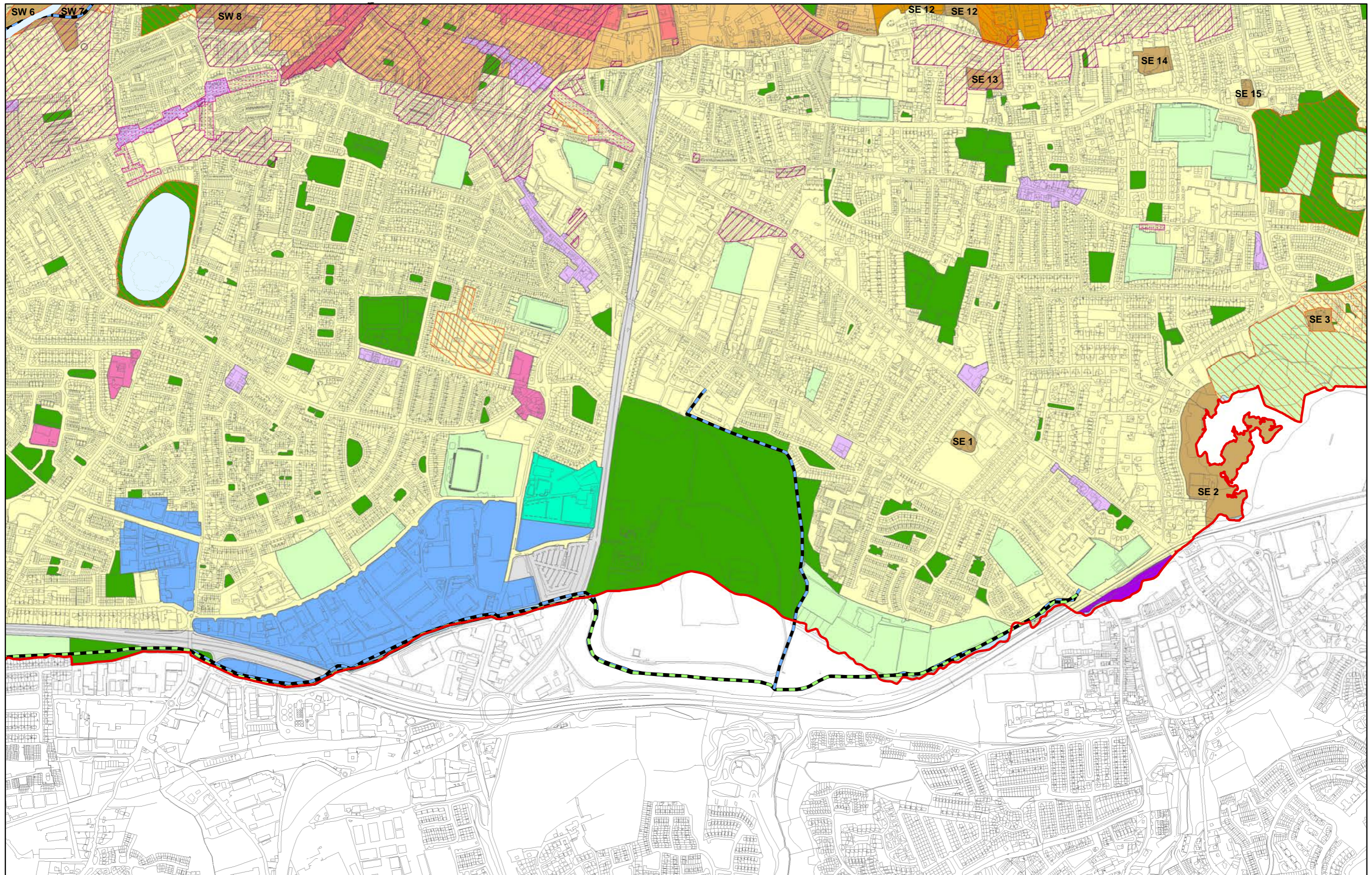




Base map © OSI; all rights reserved.

Zoomable map available on our website: [www.corkcitydevelopmentplan.ie](http://www.corkcitydevelopmentplan.ie)

- |  |  |                                 |  |                                   |                                      |                        |
|--|--|---------------------------------|--|-----------------------------------|--------------------------------------|------------------------|
| Areas of High Landscape Value          | 4-Residential, Local Services and Institutional Uses | 10-Local Centres                | 14-Public Open Space                   | 18-Schools                        | Proposed Tall Buildings Location     | Indicative New Streets |
| Architectural Conservation Areas       | 7-Business and Technology                            | 11-Retail Warehousing           | 15-Public Infrastructure and Utilities | 19-Rivers/Water Bodies Protection | SEVESO Site                          |                        |
| Historic Street Character Areas        | 8-District Centres                                   | 12-Landscape Preservation Zones | 16-Mixed Use Development               | 20-Mixed Used Jacob's Island      | Amenity Routes                       |                        |
| 3-Inner City Residential Neighbourhood | 9-Neighbourhood Centres                              | 13-Sports Grounds               | 17-Quayside Amenity Area               | Local Area Plan to be Prepared    | Proposed New Amenity Routes/Upgrades |                        |

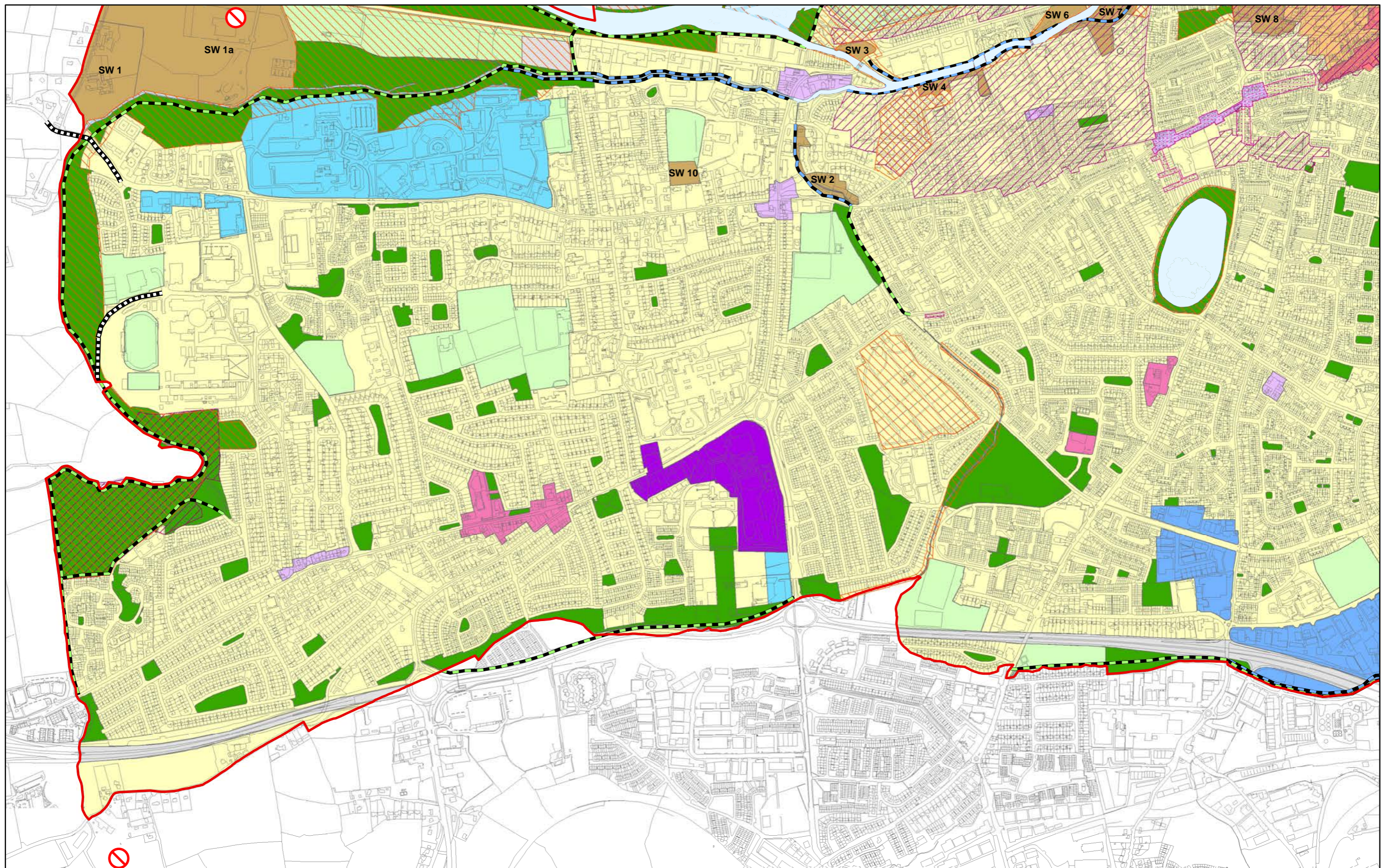


Zoomable map available on our website: [www.corkcitydevelopmentplan.ie](http://www.corkcitydevelopmentplan.ie)

Base map © OSI; all rights reserved.

- |                                    |  |                         |  |                                      |
|------------------------------------|--|-------------------------|--|--------------------------------------|
| Areas of High Landscape Value      | 3-Inner City Residential Neighbourhood               | 8-District Centres      | 12-Landscape Preservation Zones        | 16-Mixed Use Development             |
| Historic Street Character Areas    | 4-Residential, Local Services and Institutional Uses | 9-Neighbourhood Centres | 13-Sports Grounds                      | 19-Rivers/Water Bodies Protection    |
| Architectural Conservation Areas   | 5-Light Industry and Related Uses                    | 10-Local Centres        | 14-Public Open Space                   | Amenity Routes                       |
| 2-City Centre Commercial Core Area |  | 11-Retail Warehousing   | 15-Public Infrastructure and Utilities | Proposed New Amenity Routes/Upgrades |

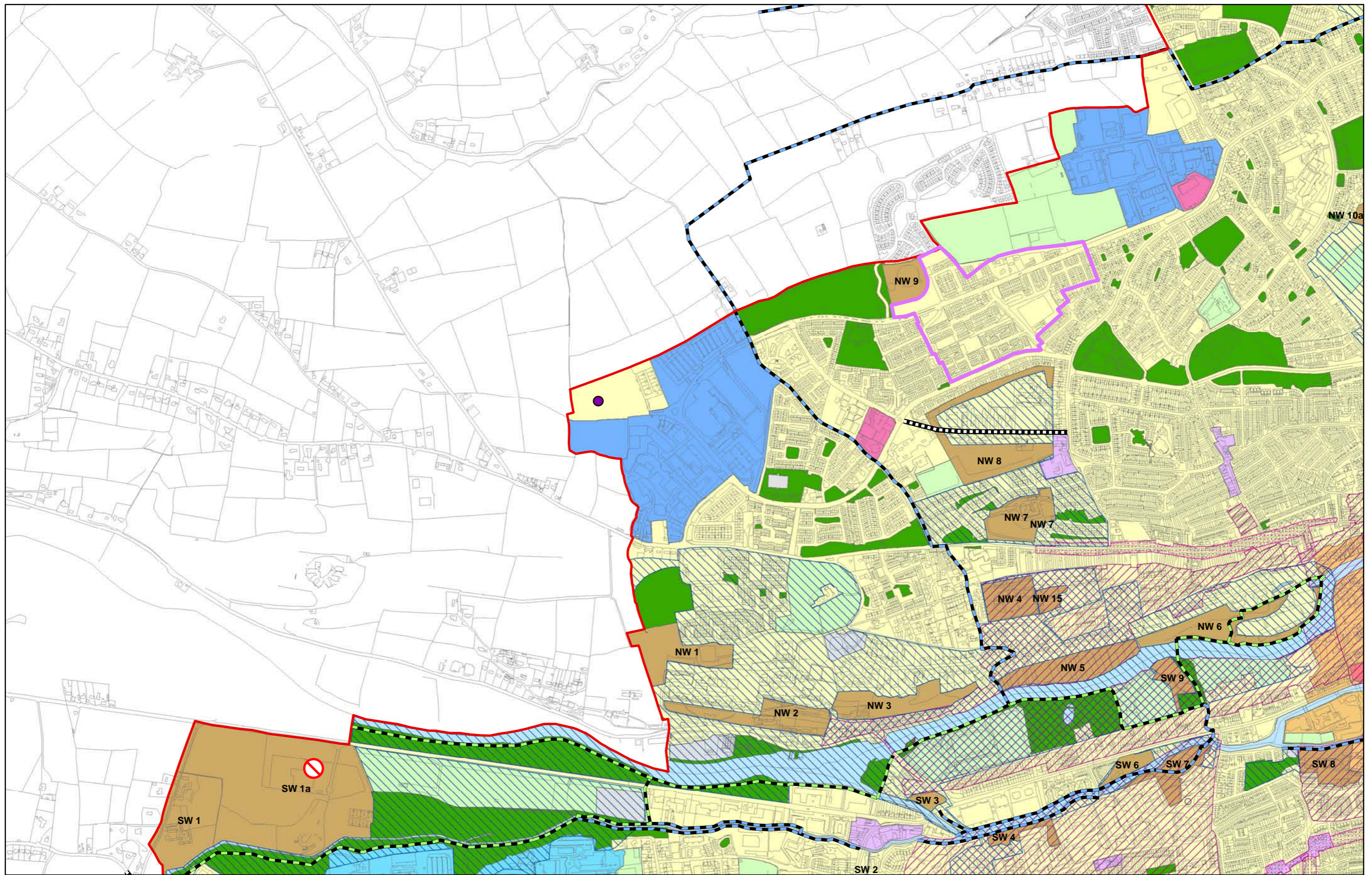




Zoomable map available on our website: [www.corkcitydevelopmentplan.ie](http://www.corkcitydevelopmentplan.ie)

Base map © OSI; all rights reserved.

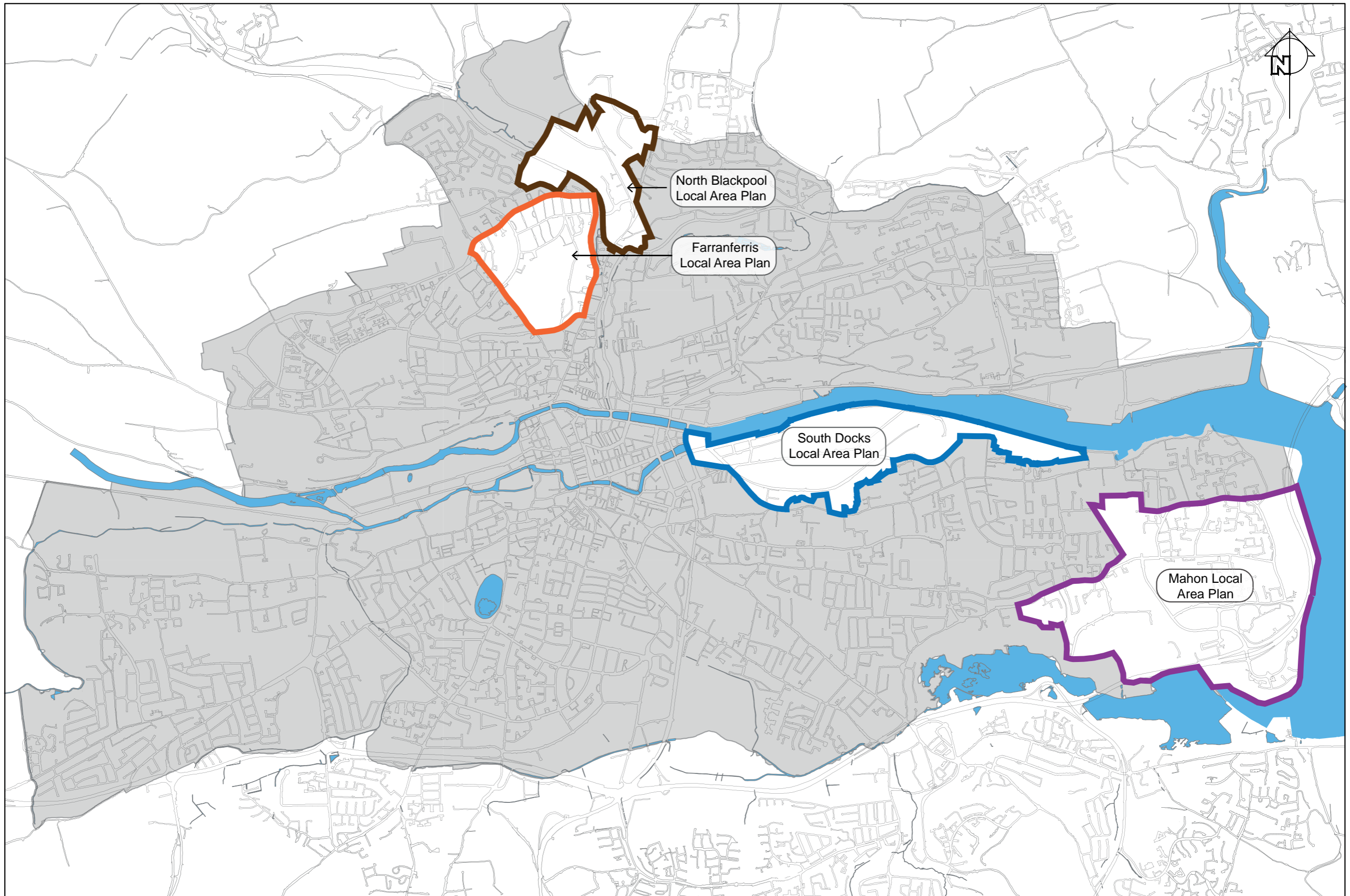
- |                                    |  |                                 |  |                                      |             |
|------------------------------------|--|---------------------------------|--|--------------------------------------|-------------|
| LAPP Boundaries                    | 3-Inner City Residential Neighbourhood               | 8-District Centres              | 13-Sports Grounds                      | Traveller Accommodation              | SEVESO Site |
| Areas of High Landscape Value      | 4-Residential, Local Services and Institutional Uses | 9-Neighbourhood Centres         | 14-Public Open Space                   | New or Realigned Streets             |             |
| Architectural Conservation Areas   | 5-Light Industry and Related Uses                    | 10-Local Centres                | 15-Public Infrastructure and Utilities | Amenity Routes                       |             |
| Historic Street Character Areas    | 7-Business and Technology                            | 12-Landscape Preservation Zones | 19-Rivers/Water Bodies Protection      | Proposed New Amenity Routes/Upgrades |             |
| 2-City Centre Commercial Core Area |  |                                 |  |                                      |             |



Zoomable map available on our website: [www.corkcitydevelopmentplan.ie](http://www.corkcitydevelopmentplan.ie)

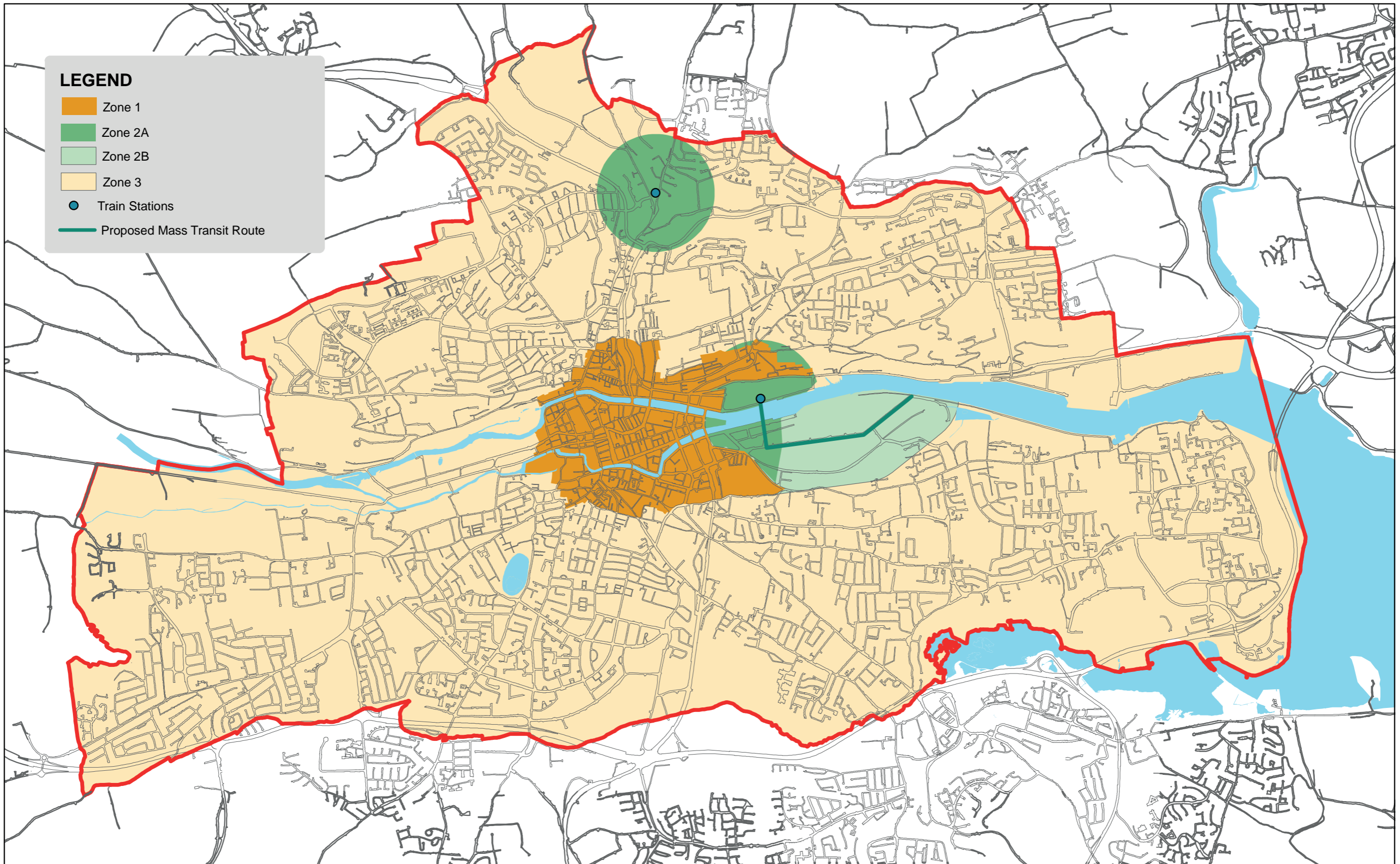
Base map © OSI; all rights reserved.

- |                                    |  |                                 |  |                          |                                      |
|------------------------------------|--|---------------------------------|--|--------------------------|--------------------------------------|
| Areas of High Landscape Value      | 3-Inner City Residential Neighbourhood               | 9-Neighbourhood Centres         | 14-Public Open Space                   | Traveller Accommodation  | Amenity Routes                       |
| Architectural Conservation Areas   | 4-Residential, Local Services and Institutional Uses | 10-Local Centres                | 15-Public Infrastructure and Utilities | SEVESO Site              | Proposed New Amenity Routes/Upgrades |
| Historic Street Character Areas    | 5-Light Industry and Related Uses                    | 12-Landscape Preservation Zones | 19-Rivers/Water Bodies Protection      | New or Realigned Streets |                                      |
| 2-City Centre Commercial Core Area | 7-Business and Technology                            | 13-Sports Grounds               | Northwest Housing Regeneration Area    |                          |                                      |

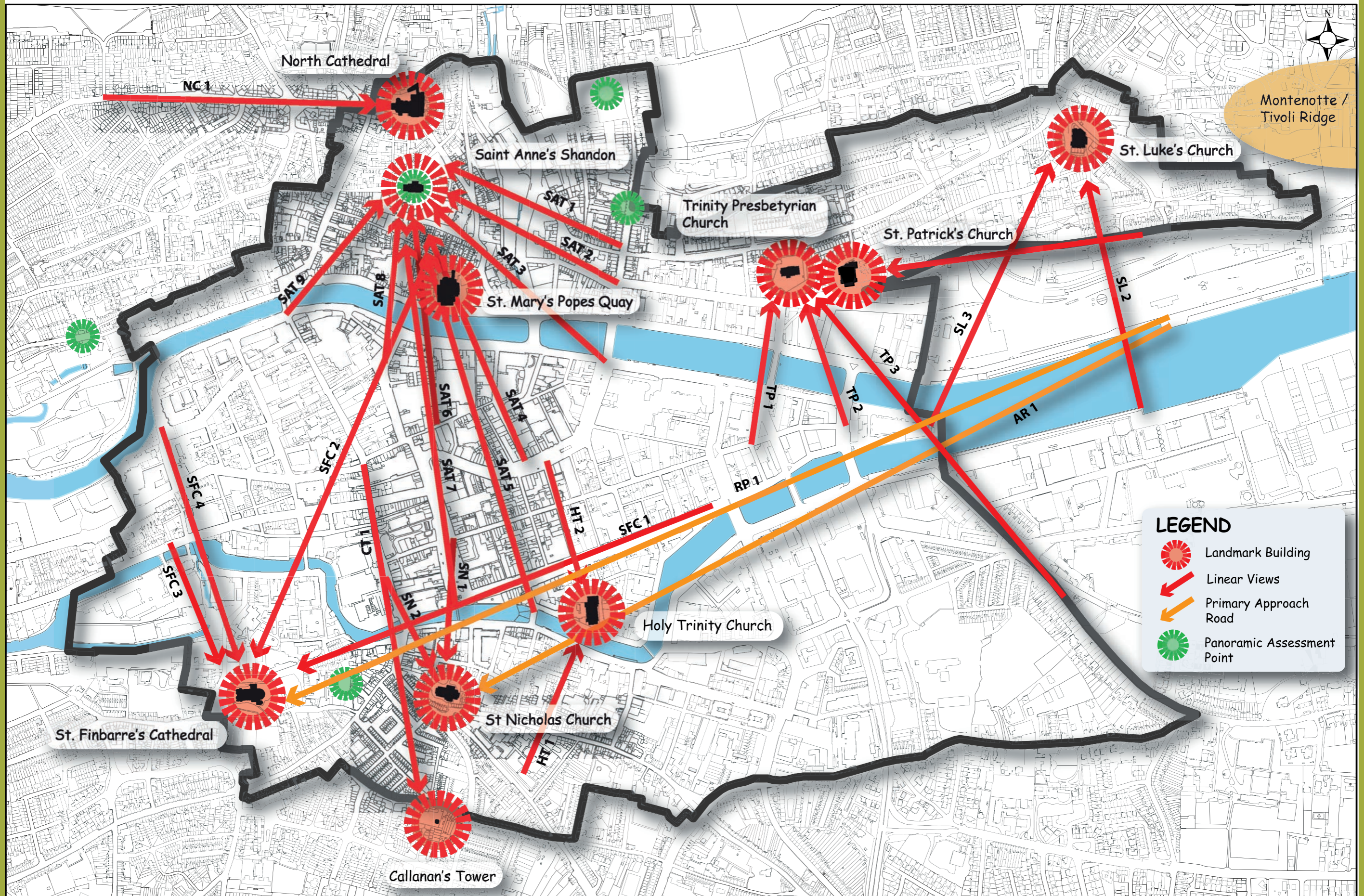


Zoomable map available on our website: [www.corkcitydevelopmentplan.ie](http://www.corkcitydevelopmentplan.ie)

©Ordnance Survey of Ireland. All rights Reserved.

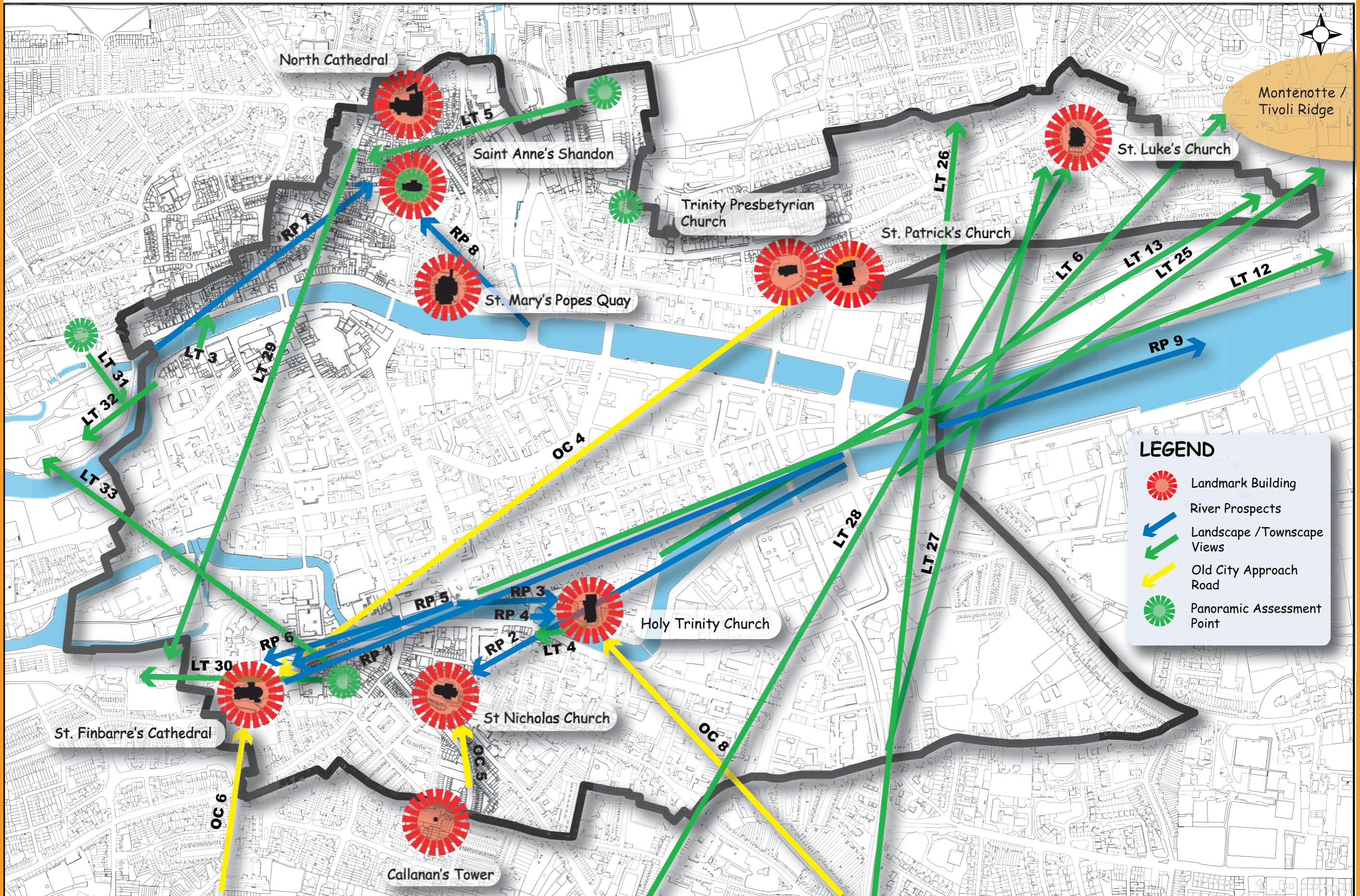


Zoomable map available on our website: [www.corkcitydevelopmentplan.ie](http://www.corkcitydevelopmentplan.ie)

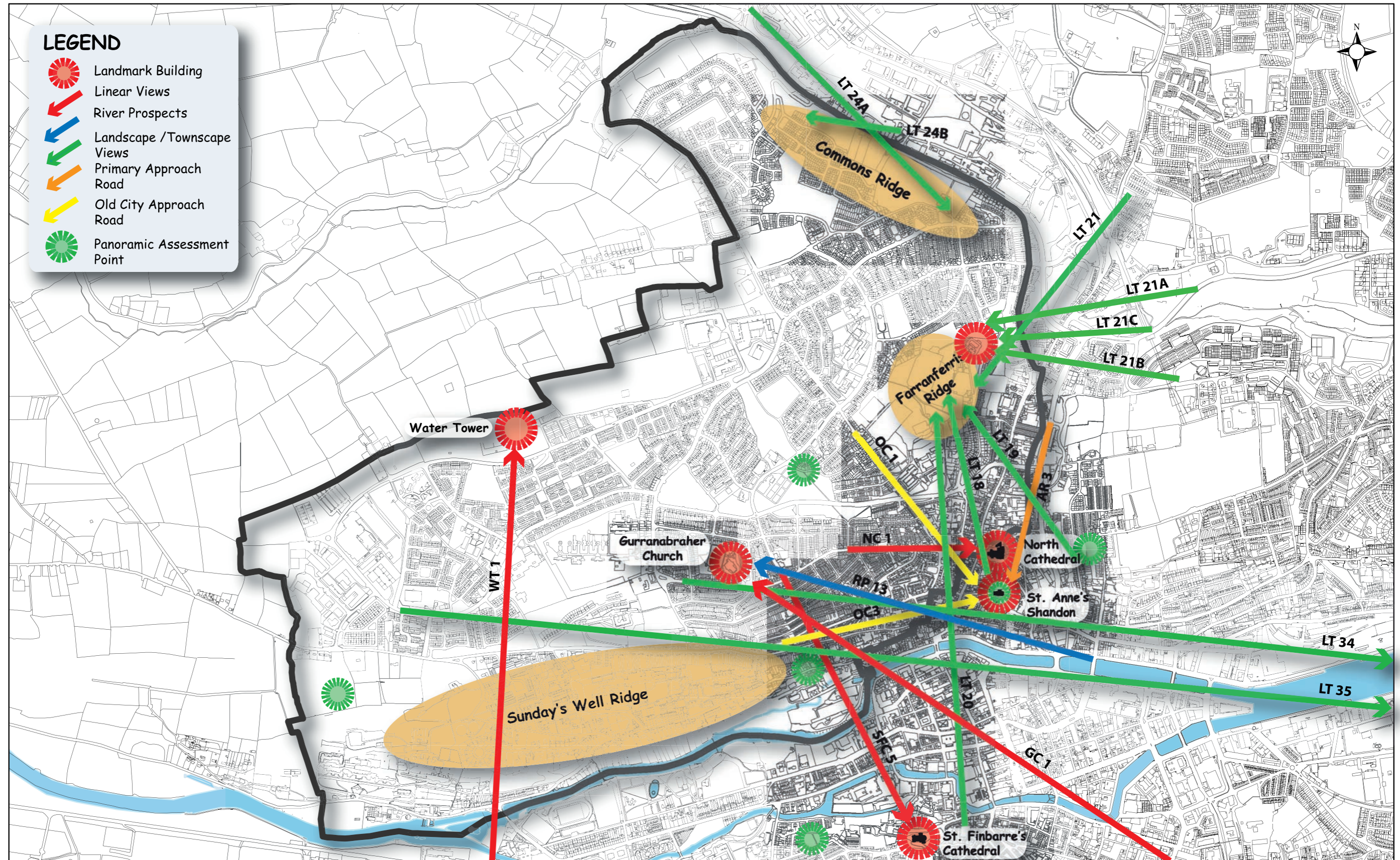


Zoomable map available on our website: [www.corkcitydevelopmentplan.ie](http://www.corkcitydevelopmentplan.ie)

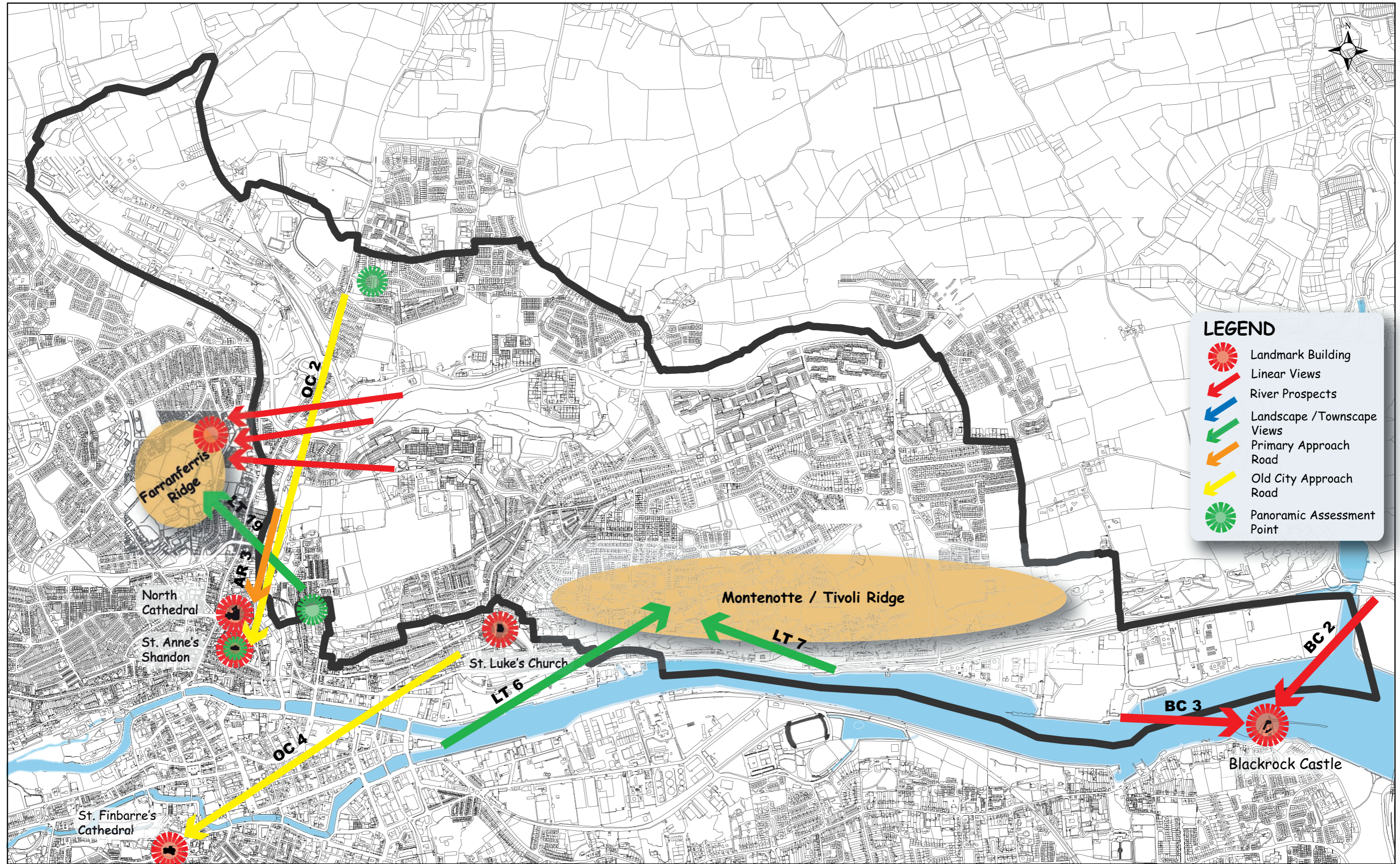




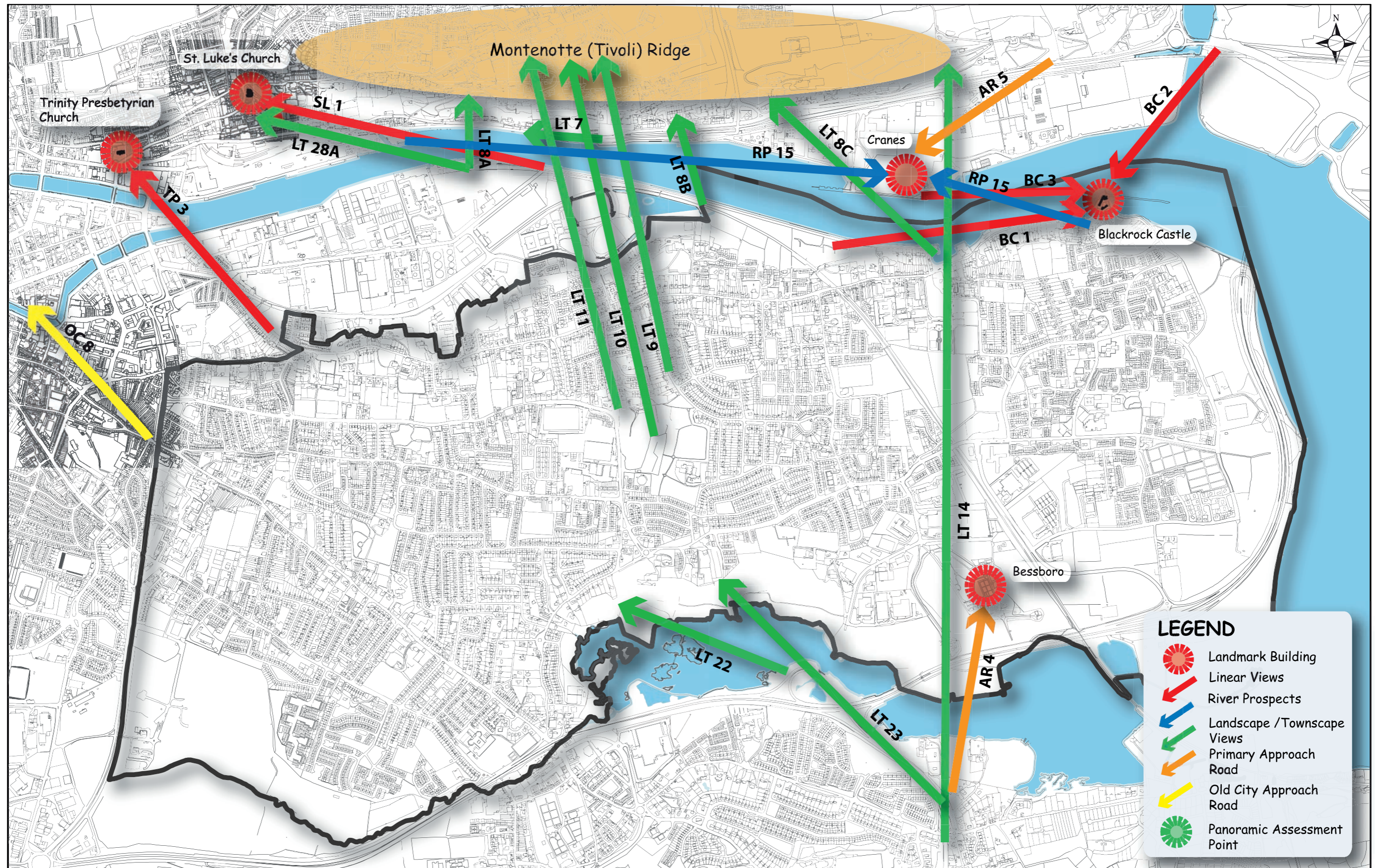
Zoomable map available on our website: [www.corkcitydevelopmentplan.ie](http://www.corkcitydevelopmentplan.ie)



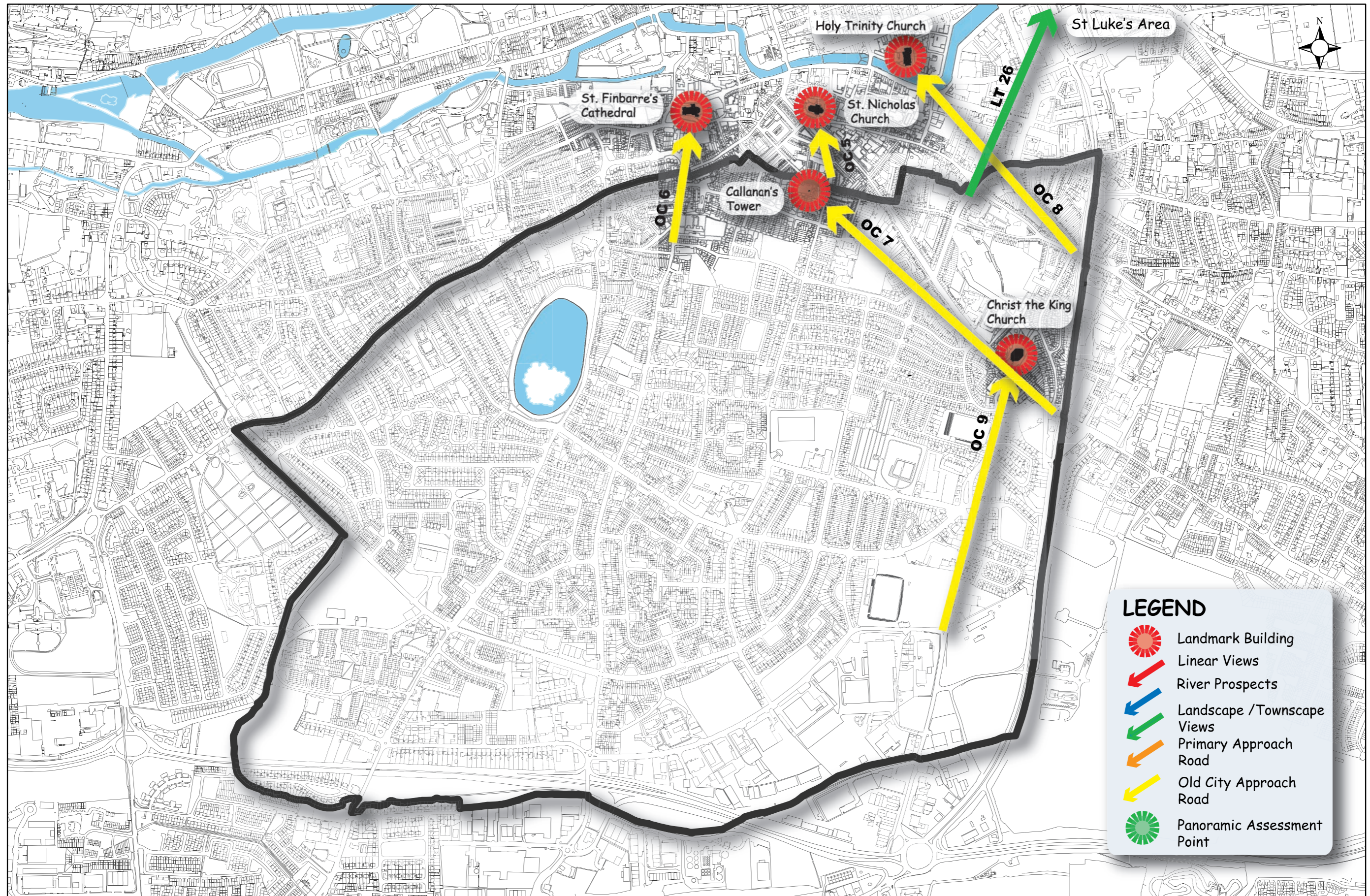
Zoomable map available on our website: [www.corkcitydevelopmentplan.ie](http://www.corkcitydevelopmentplan.ie)



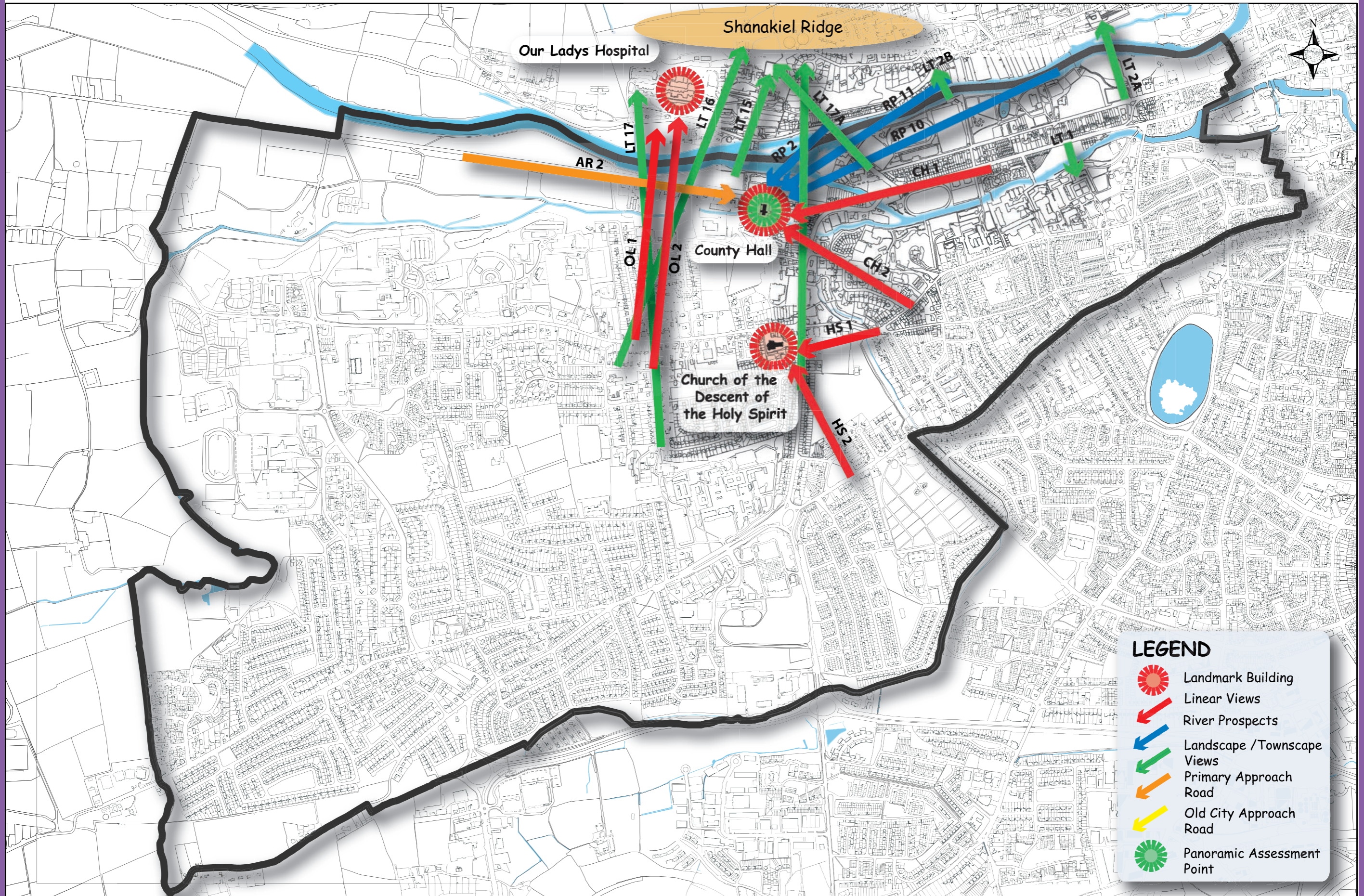
Zoomable map available on our website: [www.corkcitydevelopmentplan.ie](http://www.corkcitydevelopmentplan.ie)



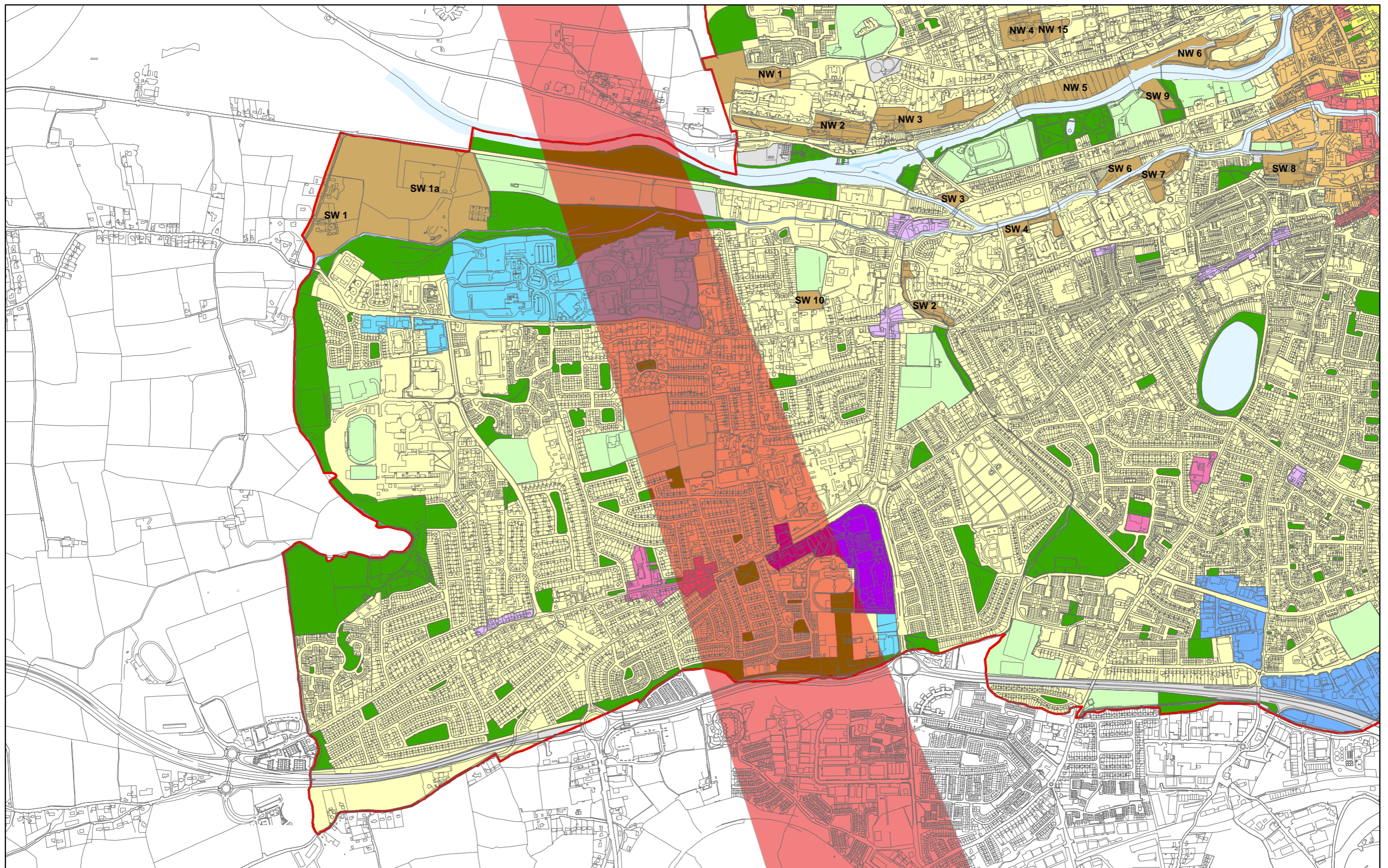
Zoomable map available on our website: [www.corkcitydevelopmentplan.ie](http://www.corkcitydevelopmentplan.ie)



Zoomable map available on our website: [www.corkcitydevelopmentplan.ie](http://www.corkcitydevelopmentplan.ie)



Zoomable map available on our website: [www.corkcitydevelopmentplan.ie](http://www.corkcitydevelopmentplan.ie)



Zoomable map available on our website: [www.corkcitydevelopmentplan.ie](http://www.corkcitydevelopmentplan.ie)

Base map © OSi; all rights reserved.

-  Airport Public Safety Zone
-  City Boundary









Comhairle Cathrach Chorcaí  
Cork City Council